

Table 1. Cancer incidence by total number and percentage Maori and non-Maori for total and sole NZCMS, ever-Maori, NHI, and unadjusted estimates (1996-2000)

	Total				Sole		
	NZCMS	Ever-Maori	Unadjusted	NHI	NZCMS	Unadjusted	NHI
Maori number	843	906	792	649	675	788	600
(%)	(8.1)	(8.6)	(7.5)	(6.2)	(6.3)	(7.5)	(5.7)
non-Maori number	9581	9618	9732	9875	10005	9736	9924
(%)	(91.6)	(91.4)	(92.5)	(93.8)	(93.7)	(92.5)	(94.3)
Total number	10,424	10,524	10,524	10,524	10,680	10,524	10,524

NZCMS= New Zealand Census Mortality Study; NHI=National Health Index.

Table 2. Age-specific relative risk of total and sole, Maori vs non-Maori breast cancer incidence for NZCMS, ever-Maori, NHI, and unadjusted estimates (1996–2000)

Age group (years)	25-29	30-34	35-39	40-44	45-49	50-54	55-59	60-64	65-69	70-74	75-79	80-84	85+
Total													
NZCMS	1.8 (1.1-3.0) H	1.3 (0.9-1.8)	1.3 (1.0-1.6)	1.2 (1.0-1.4)	1.0 (0.8-1.2)	1.0 (0.8-1.1)	0.9 (0.7-1.1)	1.0 (0.8-1.2)	1.2 (1.0-1.5)	1.1 (0.8-1.5)	1.0 (0.6-1.5)	0.8 (0.5-1.4)	0.7 (0.4-1.5)
Ever-Maori	1.7 (1.0-2.8)	1.2 (0.8-1.7)	1.2 (1.0-1.5)	1.2 (1.0-1.5)	1.1 (1.0-1.3)	1.1 (0.9-1.3)	1.0 (0.8-1.2)	1.1 (0.9-1.3)	1.2 (1.0-1.5)	1.2 (0.9-1.6)	1.0 (0.6-1.6)	0.8 (0.5-1.4)	0.8 (0.4-1.6)
Unadjusted	1.6 (0.9-2.8)	1.1 (0.8-1.5)	1.1 (0.9-1.5)	1.1 (0.9-1.3)	0.9 (0.8-1.1)	0.9 (0.7-1.1)	0.8 (0.7-1.0)	0.9 (0.7-1.2)	1.1 (0.9-1.4)	1.0 (0.7-1.4)	0.9 (0.6-1.3)	0.7 (0.4-1.5)	0.6 (0.3-1.4)
NHI	1.3 (0.7-2.4)	0.7 (0.4-1.0)	0.9 (0.6-1.2)	0.8 (0.7-1.1)	0.7 (0.6-0.9) L	0.7 (0.6-0.9) L	0.7 (0.5-0.9) L	0.8 (0.7-1.1)	0.9 (0.7-1.1)	0.9 (0.6-1.3)	0.6 (0.3-1.2)	0.7 (0.4-1.2)	0.5 (0.2-1.3)
Sole													
NZCMS	2.2 (1.1-4.4) H	1.4 (0.9-2.1)	1.3 (0.9-1.8)	1.3 (1.0-1.6)	1.2 (1.0-1.4)	1.1 (0.9-1.3)	1.0 (0.8-1.2)	1.1 (0.8-1.4)	1.3 (1.0-1.7)	1.2 (0.9-1.7)	1.1 (0.7-1.8)	1.0 (0.5-2.0)	1.1 (0.5-2.4)
Unadjusted	3.0 (1.6-5.3) H	1.9 (1.3-2.7) H	1.7 (1.3-2.3) H	1.6 (1.4-2.0) H	1.4 (1.2-1.7) H	1.3 (1.0-1.6)	1.1 (0.9-1.4)	1.2 (1.0-1.5)	1.5 (1.2-1.9) H	1.4 (1.0-1.9)	1.2 (0.8-2.0)	1.1 (0.6-2.0)	1.1 (0.5-2.3)
NHI	2.5 (1.2-4.9) H	0.9 (0.6-1.5)	1.2 (0.9-1.6)	1.2 (0.9-1.5)	1.0 (0.8-1.2)	0.9 (0.8-1.2)	0.9 (0.7-1.1)	1.1 (0.9-1.3)	1.1 (0.9-1.5)	1.1 (0.8-1.6)	0.8 (0.4-1.5)	0.9 (0.5-1.8)	0.9 (0.4-2.2)

H=significantly higher risk (alpha=0.05); L=significantly lower risk (alpha=0.05); NZCMS= New Zealand Census Mortality Study; NHI=National Health Index.

Table 3. Cancer mortality by total number and percentage Maori and non-Maori for total and sole NZCMS, ever-Maori, NHI, and unadjusted estimates (1996–2000)

	Total				Sole		
	NZCMS	Ever-Maori	Unadjusted	NHI	NZCMS	Unadjusted	NHI
Maori number	254	252	239	188	254	239	182
(%)	(9.9)	(9.8)	(9.3)	(7.3)	(9.9)	(9.3)	(7.1)
non-Maori number	2306	2325	2338	2389	2306	2338	2395
(%)	(90.1)	(90.2)	(90.7)	(90.7)	(90.1)	(90.7)	(92.9)
Total number	2560	2577	2577	2577	2560	2577	2577

NZCMS= New Zealand Census Mortality Study; NHI=National Health Index.

Table 4. Age-specific relative risk of total and sole, Maori vs non-Maori breast cancer mortality for NZCMS, ever-Maori, NHI, and unadjusted estimates (1996-2000)

Age group (years)	25-29	30-34	35-39	40-44	45-49	50-54	55-59	60-64	65-69	70-74	75-79	80-84	85+
Total													
NZCMS	4.7 (1.5-14.8) ^H	2.4 (1.2-4.8) ^H	2.2 (1.4-3.5) ^H	2.0 (1.3-3.1) ^H	1.7 (1.2-2.5) ^H	1.7 (1.2-2.3) ^H	1.8 (1.3-2.5) ^H	1.0 (0.6-1.7)	1.0 (0.6-1.7)	1.2 (0.7-2.0)	1.8 (1.1-3.1) ^H	1.3 (0.6-2.9)	0.9 (0.4-2.4)
Ever-Maori	4.0 (1.2-13.0) ^H	2.0 (1.2-3.4) ^H	2.0 (1.2-3.4) ^H	1.8 (1.2-2.8) ^H	1.8 (1.2-2.6) ^H	1.6 (1.1-2.3) ^H	1.7 (1.3-2.3) ^H	1.0 (0.7-1.6)	1.1 (0.7-1.8)	1.3 (0.8-2.1)	1.6 (0.9-2.8)	1.1 (0.5-2.7)	0.9 (0.4-2.5)
Unadjusted	4.0 (1.1-15.1) ^H	2.0 (1.0-4.0)	2.0 (1.2-3.5)	1.7 (1.1-2.7) ^H	1.6 (1.1-2.3) ^H	1.6 (1.1-2.3) ^H	1.7 (1.3-2.3) ^H	0.9 (0.6-1.5)	0.9 (0.5-1.5)	1.1 (0.6-2.0)	1.6 (0.9-2.8)	1.1 (0.5-2.6)	0.7 (0.2-2.3)
NHI	2.9 (0.9-9.9)	1.7 (0.9-3.3)	1.2 (0.7-2.0)	1.6 (1.1-2.4) ^H	1.3 (0.8-1.9)	1.0 (0.7-1.5)	1.2 (0.8-1.7)	0.7 (0.4-1.4)	0.8 (0.4-1.3)	0.9 (0.5-1.6)	1.1 (0.6-2.1)	1.1 (0.5-2.6)	0.6 (0.1-2.1)
Sole													
NZCMS	5.6 (1.8-17.1) ^H	2.6 (1.2-5.5) ^H	2.3 (1.3-4.0) ^H	2.1 (1.4-3.3) ^H	2.0 (1.3-3.0) ^H	1.9 (1.4-2.7) ^H	2.0 (1.4-2.9) ^H	1.1 (0.7-1.9)	1.1 (0.7-1.9)	1.4 (0.8-2.5)	2.0 (1.2-3.6) ^H	1.6 (0.7-3.9)	1.3 (0.4-3.8)
Unadjusted	7.6 (2.6-22.5) ^H	3.4 (1.7-6.7) ^H	3.1 (1.9-5.1) ^H	2.7 (1.8-4.0) ^H	2.4 (1.6-3.4) ^H	2.3 (1.6-3.2) ^H	2.3 (1.7-3.1) ^H	1.2 (0.7-2.0)	1.2 (0.7-2.2)	1.6 (0.9-2.8)	2.2 (1.2-4.1) ^H	1.7 (0.6-4.7)	1.3 (0.4-3.9)
NHI	5.6 (1.6-18.8) ^H	3.0 (1.4-6.1) ^H	1.8 (1.0-3.2)	2.3 (1.4-3.6) ^H	1.7 (1.1-2.7) ^H	1.5 (1.0-2.2)	1.5 (1.0-2.3)	1.0 (0.6-1.7)	1.1 (0.6-1.9)	1.2 (0.7-2.2)	1.5 (0.8-3.0)	1.4 (0.5-3.6)	1.0 (0.2-3.7)

H=significantly higher risk (alpha=0.05); NZCMS= New Zealand Census Mortality Study; NHI=National Health Index.

Figure 1. Age-specific relative risk (Maori vs non-Maori) of breast cancer incidence for total and sole NZCMS, ever-Maori, NHI, and unadjusted estimates (1996-2000) (NZCMS=New Zealand Census Mortality Study; NHI=National Health Index)

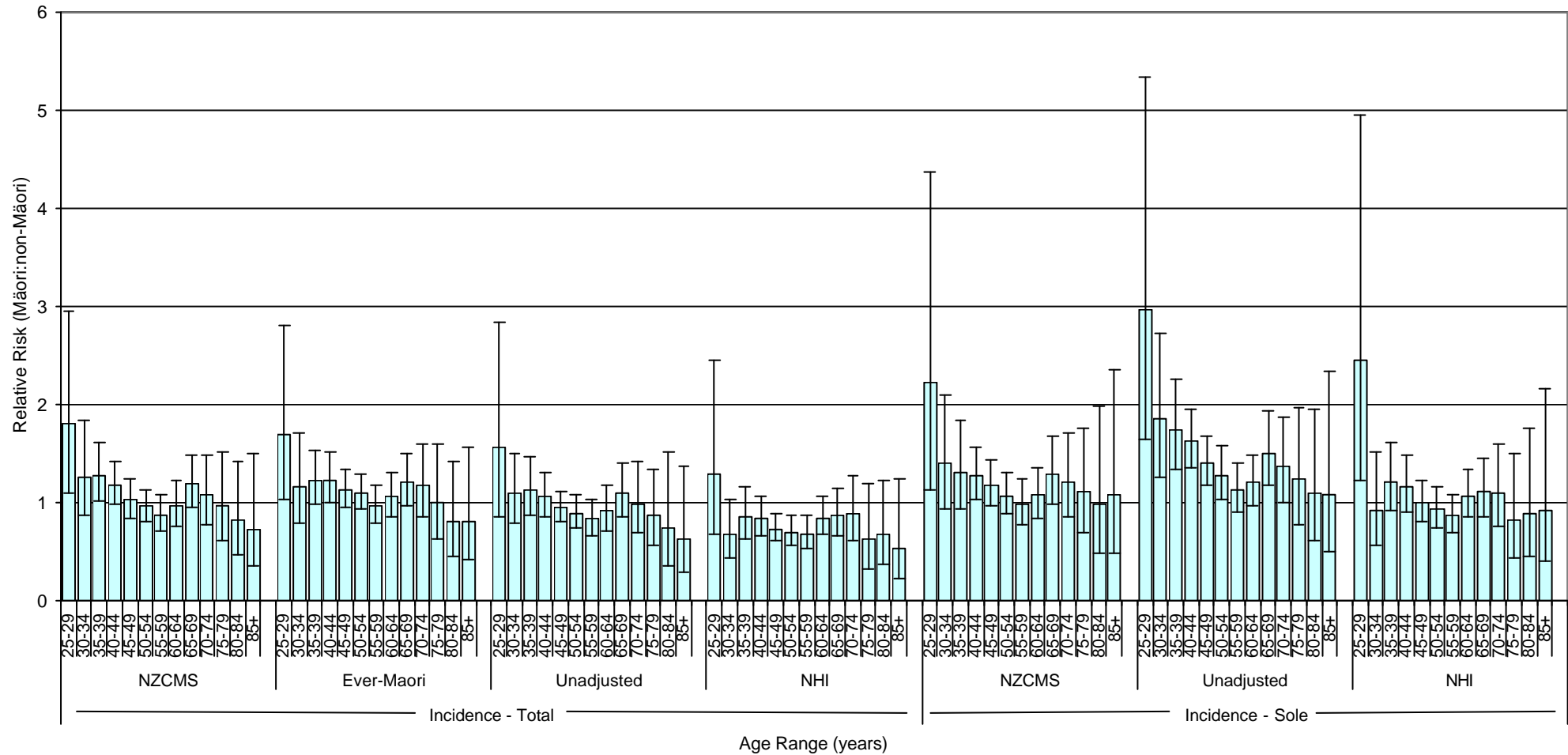
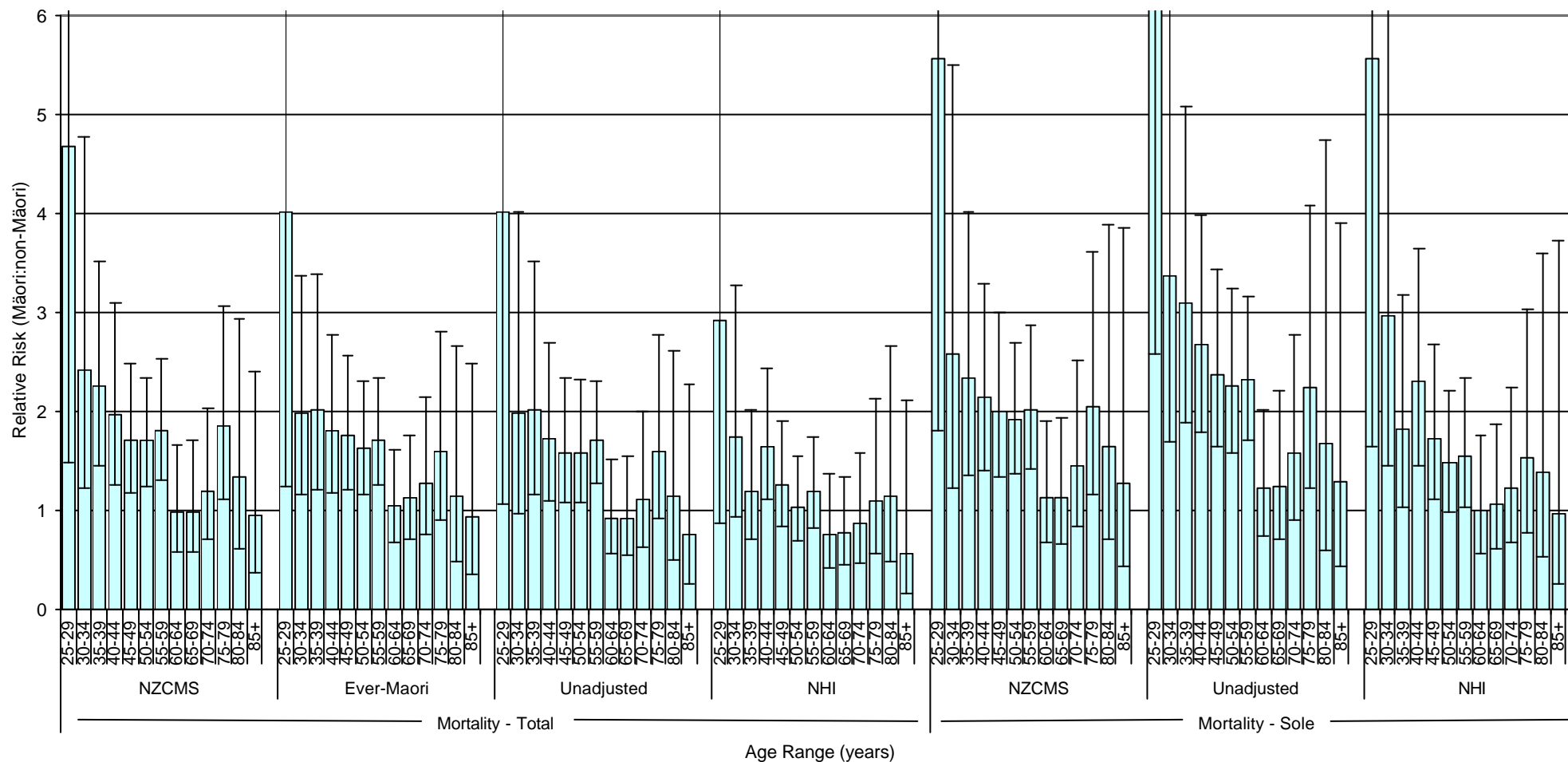


Figure 2. Age-specific relative risk (Maori vs non-Maori) of breast cancer mortality for total and sole NZCMS, ever-Maori, NHI, and unadjusted estimates (1996-2000) (NZCMS=New Zealand Census Mortality Study; NHI=National Health Index)



End